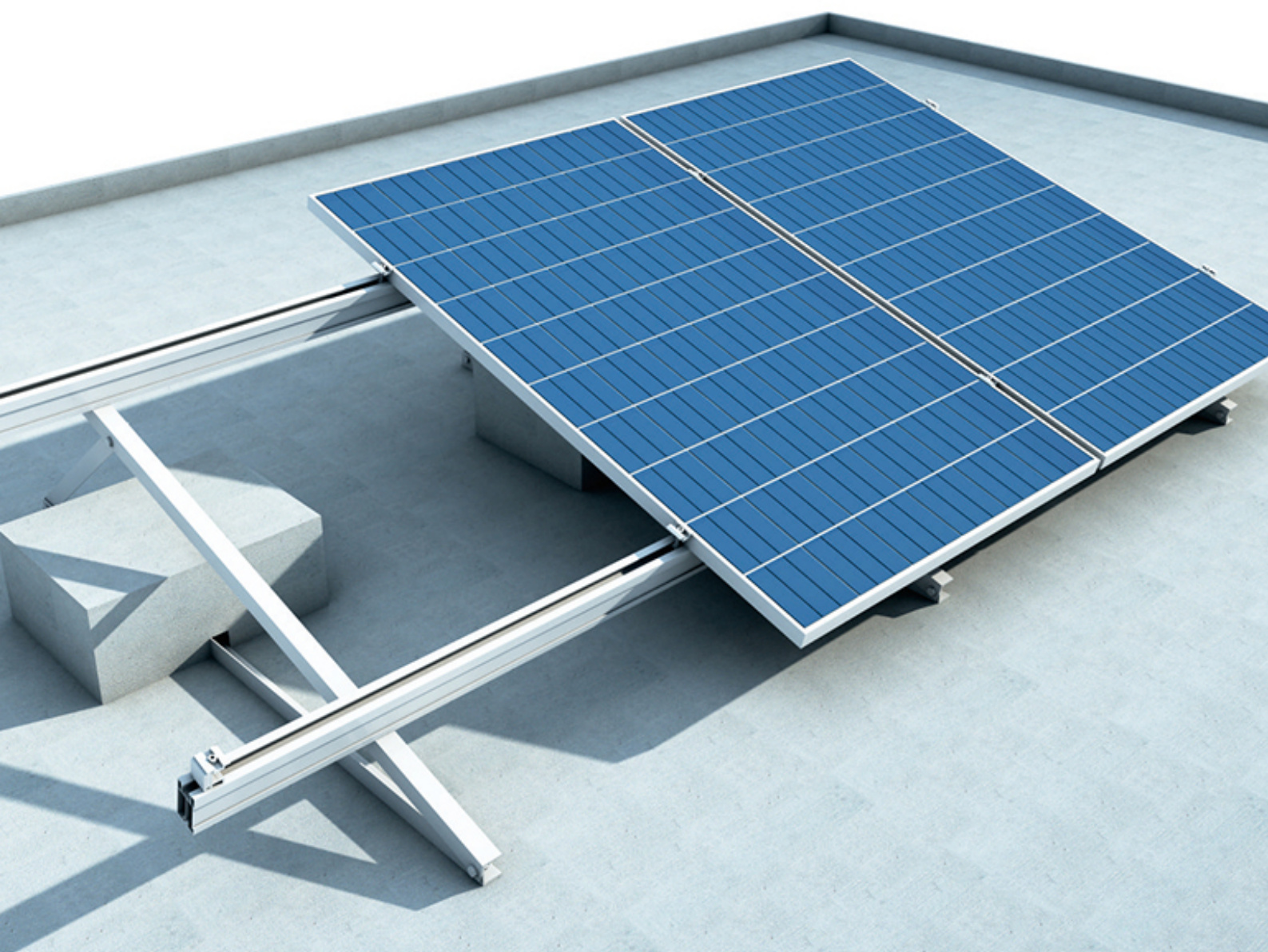


ADJUSTABLE FLAT ROOF MOUNTING SYSTEM

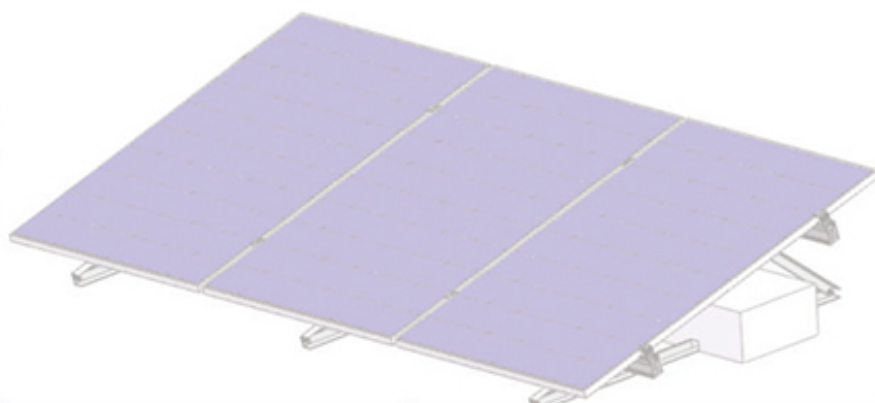
10
YEARS
WARRANTY

25
YEARS
SERVICE LIFE

Flat roof mounting system is designed according to the roof bearing capacity and waterproof requirement. Solarcom system is being widely used in all kinds of flat roof with the features of being "security, economic and speedy".



Our system is optimized according to local geographical and climatic conditions. We have been striving for excellence in analysis of mechanics and structure.



| | | |
|---------------------------------------|---|---|
| 1 Rail | 2 End-clamp | 3 Triangle Bracket |
| | | |
| <p>Material saving, High strength</p> | <p>Stable pressure, Easy to install</p> | <p>1. Pre-adjustable angle: 10° 20° 25° 2. Triangular supporting system with stable and economy</p> |

| Technical Data | |
|--------------------|--|
| Installation Site | Flat Roof |
| Wind load | 120km/h Depend on local environment |
| Snow load | 0.45kN/m ² Depend on local environment |
| Material | AL-6005-T5/AL-6063B-T5 High-strength aluminium |
| Basement | Fixed by pressed block |
| Module arrangement | Vertical/Horizontal |
| Standard | AS/NZS 1170 Standard other international standard |
| Possible gradient | Client requirement |

Product Features:

1. Reinforce active regions of the frame, increase product service life.
2. Optimize the weight of pressed block according to the roof bearing capacity.
3. Easy installation. Without pretreatment.